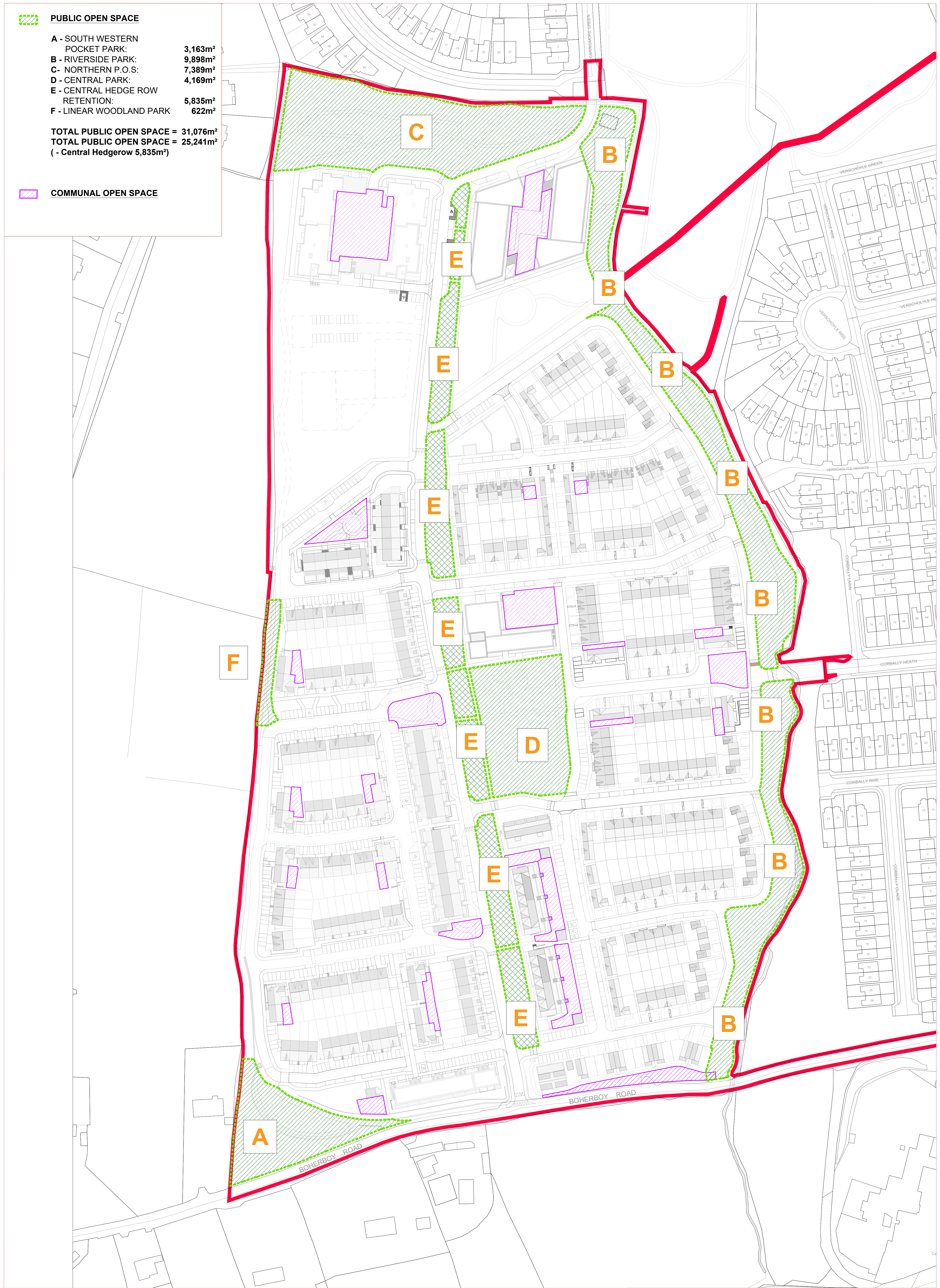


PUBLIC OPEN SPACE

- A - SOUTH WESTERN POCKET PARK: 3,163m²
- B - RIVERSIDE PARK: 9,898m²
- C - NORTHERN P.O.S: 7,389m²
- D - CENTRAL PARK: 4,169m²
- E - CENTRAL HEDGE ROW RETENTION: 5,835m²
- F - LINEAR WOODLAND PARK: 622m²

TOTAL PUBLIC OPEN SPACE = 31,076m²
 TOTAL PUBLIC OPEN SPACE = 25,241m²
 (- Central Hedgerow 5,835m²)

COMMUNAL OPEN SPACE



NOTES:

DO NOT SCALE FROM DRAWINGS. WORK TO FIGURED DIMENSIONS ONLY. ARCHITECT TO BE NOTIFIED OF ALL DISCREPANCIES.

| REVISIONS | | |
|-----------|-------------|-----|
| DATE | DESCRIPTION | No. |
| | | |
| | | |
| | | |
| | | |

MCCORMACKS
MCROSSAN OROURKE MANNING ARCHITECTS

PROJECT TITLE:
Proposed Residential Development @ Boherboy, Saggart

DRAWING TITLE:
Site Layout Plan Public Open Space

1 Grantham Street, Dublin 8, D08 A49Y, Ireland
 Tel: 01-4782700 Fax: 01-4782711 E-Mail: info@mccormacks.com

DATE: Sept '21
 SCALE: 1/1000 @ A1
 FOR NO: 20002
 DRAWING NO: PL05